



WOMEN IN MINING OPERATIONS

Organisation Profile

INTRODUCTION

Overview:

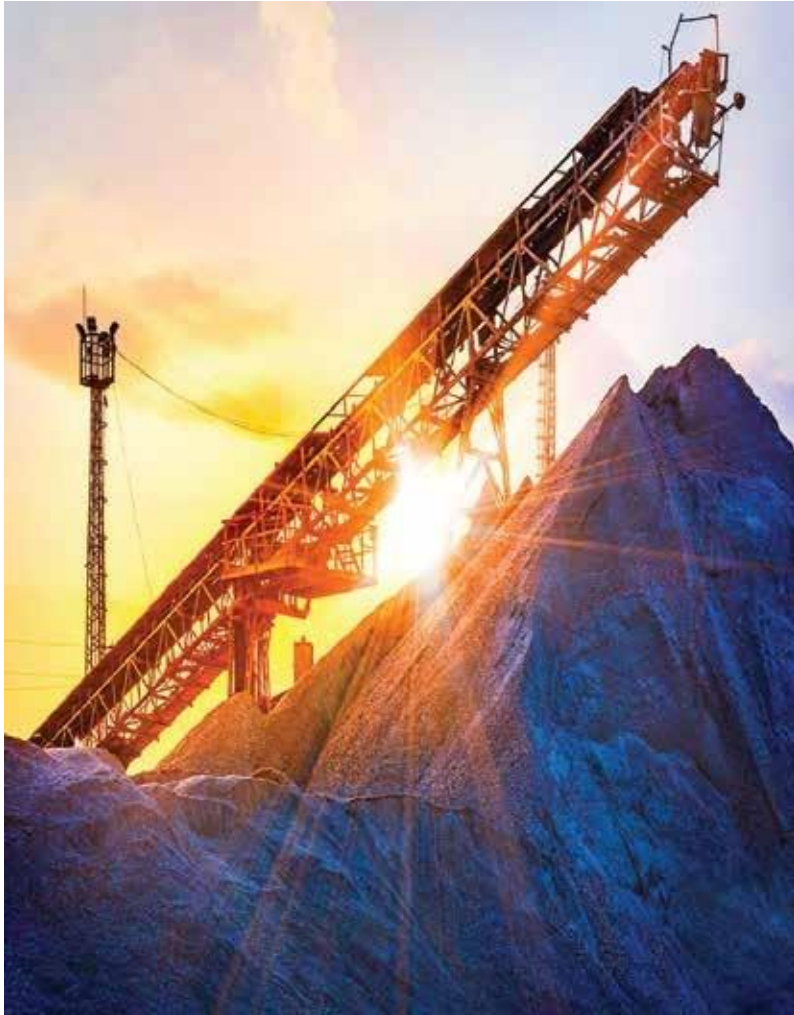
Women in Mining Operations is a special program for women focused on the empowerment of rural communities - especially women and youths engaging in artisanal and small-scale industrial mining activities in Tanzania.

We partner with various stakeholders in mining sector, and incubate network and groups of Artisans and Small-Scale Miners into fully-fledged, future-fit, sustainable mining enterprises, participating in commercial minerals supply chains and enabling multinationals in Mining Sector to source high-quality value added minerals from our network of Artisans and small scale Miners. We provide value to Small Scale Miners through integrated training into profitable mining and value addition, access to formal credit facilities, mining tools and equipment, technology and markets.

Our organization and program focuses on solving the following challenges for Small Scale Miners particularly in industrial mining:

1. Evacuation of their mining places. This has become a big problem to the small miners due to lack of license security, most of the time big investors with big mining license are given first priority than small scale miners who own small primary mining licenses. We support them by grouping them into formal legal groups to function as fully fledged mining enterprises.





2. Access to credit and finance to small scale miners has also become a big challenge to them. In Tanzania small scale miners are unable to secure loans from banks and other financial institutions for their starting capital and this is especially the case for female miners and for miners who operate without licenses. This is also due to lack of collateral and the possible inability and unwillingness of the miners to pay back their loans. We support them by registering their network groups, provide credit facilities and later we link them to commercial banks.
3. Lack of equipment and machinery; One of the reasons why small scale miners are classified as small-scale miners is because of the kind of equipment and machinery they use. In most mining sectors in Tanzania, small-scale miners use traditional techniques and low level equipment in excavation or digging, rudimentary tools, manual devices or simple portable machines. These tools are often not sufficient to carry out their activities and thus, they often do not perform to their maximum capabilities. This lack of equipment is worsened by the fact that miners do not have starting capital in order to acquire the tools they require. More so, miners have no access to credit from formal financial institutions for them to finance their operational requirements. We Support them by giving them loan to buy tools and machinery in partnership with other equipment suppliers.



4. Poor technologies used by small scale miners also pose a danger to the miners themselves who are constantly harmed and even killed due to poor occupational safety standards. The absence of machinery means work has to be done manually, thus resulting in fatalities. Also, many mines are not carefully planned due to the fact that they are illegal and therefore, structures are made in such a way that they are easily concealed. In many countries across the world, including Tanzania, measures for prevention of mining accidents and other fatalities either do not exist or are not properly enforced. We Support them by forming groups, trainings and provide access to tools and equipments.
5. Lack of market information and access to it is another challenge facing small scale miners in different mining regions in Tanzania. Most miners lack education hence have inadequate knowledge of pricing their products, this can be clearly manifest itself in how the miners sell their stones and the prices they sell it for, in comparison to the real value of the stones. We support them with trainings and connecting them to multinational customers.
6. Health & Safety Challenges. Mining is a dangerous job. It becomes even more deadly with ASM, as miners work with basic tools and little to no safety equipment in very dangerous environments. ASM excavation pits typically have poor ventilation - which increases the chance of methane or coal dust explosions - and no support structures to prevent





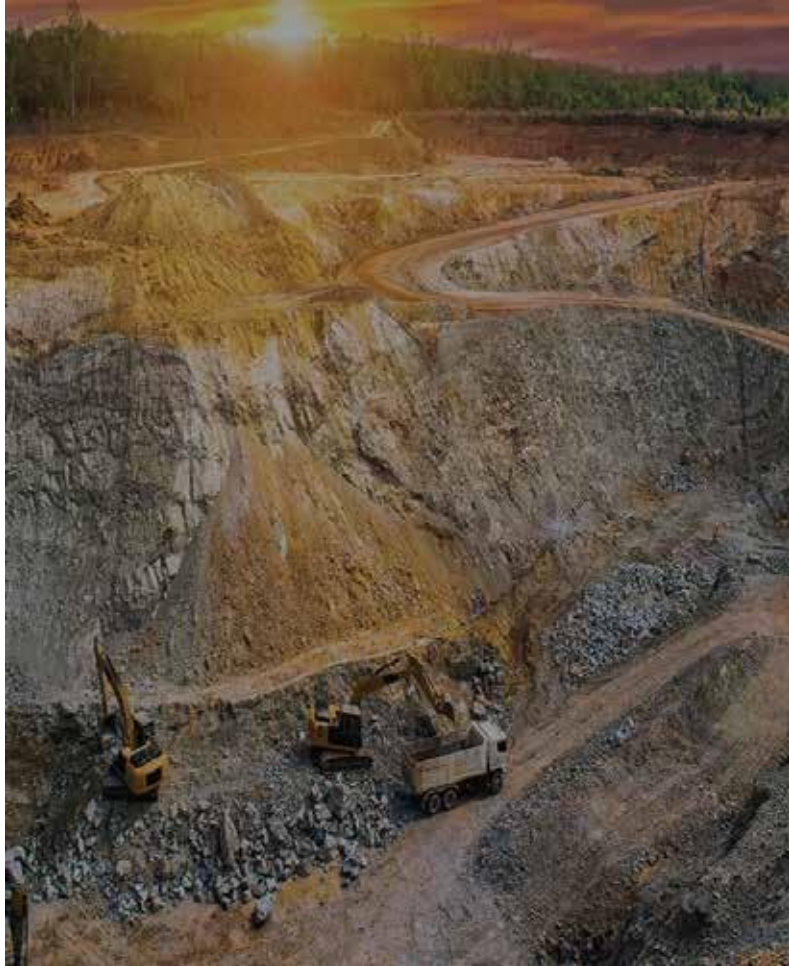
unexpected collapse. Besides the dangers that exist at the bottom of an unsafe pit, improper use of chemicals and burning for the extraction of metals also greatly endanger miners and their communities' health. Mercury can cause irreparable damage to the nervous system and lead to death, but it is not the only silent killer of Small Scale miners. We support them with trainings about unstable mining shafts, inform them on the dangers of chemical processing of metals, or information about health centres for cases of emergency.

7. Environmental Degradation: The use of toxic chemicals in the processing of metals, such as mercury amalgamation to extract various minerals from ore, not only endanger the health of miners and their families, but contribute greatly to irreversible and widespread environmental damage. ASM techniques oftentimes result in the buildup of silt and dumping of effluent in rivers, while inadequate mine closures can lead to acid rock drainage that further pollutes local water sources. With rivers spanning entire continents, toxins are rarely restricted to the mining community alone; in fact, toxicity from ASM techniques can contaminate and destroy entire ecosystems, from forests to families of fish due to mercury or cyanide poisoning. We help by sharing information on environmentally sustainable extraction and processing techniques to help miners abide by certain environmental standards normally hampered by their informality. This will empower miners to make better choices for their communities and the planet.

8. Lack of Empowerment for women: Women are an essential part of artisanal Small Scale mining. They take on roles from panning and processing to trading goods and services. They rely on the income from this informal mining economy to support their households and dependents. But their diverse participation and challenges to be recognized as economic actors in the ASM sector are most often ignored. Women find it difficult to work in teams that include men, in part because they face discrimination in excavation activities. They also face gender discrimination at mine sites, preventing them from taking on roles that would provide a higher income. TIMO Provide capacity building and training for women miners to increase technical and legal mining knowledge as well as to identify entrepreneurial opportunities. Additionally, establish child care centres and other services to address challenges women face at mine sites.

We ensure that Small Scale miners access training and efficient working tools including equipment by increasing site-based demonstration centers. We empower and encourage Small Scale Miners to register formal groups and associations so that they can easily associate with rather than the current regional organizations that hardly cater for their needs. With Smaller organizations whose members have similar interests, we organize training for them through interaction with various institutions and stakeholders.





VISION STATEMENT

Empowering women and youths in Mining and Mineral Value Addition.

MISSION STATEMENT

To enable accessibility of equipment, working capital, training, marketing and mentorship among women and youths in mining sector.

OUR OBJECTIVES

1. To lobby for support and recognition of women and youth in mining nationally, regionally and internationally;
2. To identify training and technical needs of women and youth miners and organize the resources required to meet these needs;
3. To provide relevant market information and facilitate the marketing of mineral products;
4. To set up a revolving fund to enable women miners to access the necessary funding required for their operations;
5. To advocate for women in the mining sector to the government on policy issues (gender mainstreaming) and constraints faced by women



6. To transform society's attitude in favour of gender equality and greater women's participation, and empowering women to exercise their rights to develop and implement their innovative capacity to play a significant positive role in Mining and value addition
7. To access funds, develop their business model, buy or hire equipment and to market their product appropriately
8. To train and share skills in proper and profitable mining and value addition
9. To enhance awareness and support environmental impact around mining areas
10. To improve the economic and social welfare (particularly in relation to HIV AIDS) of female miners through "financial, technical and marketing services (which are) environmentally friendly, to enable them to be economically and commercially viable"
11. To enable better access to mining and value addition equipment and in promoting efficient production and greater return, while drastically improving health and safety conditions of Miners.
12. To extensively raise awareness on the parts of the financial providers and capacity building to increase female miners'



knowledge of financial systems and standard requirements.

13. To advocate communication with private sectors and government agency for benefiting miners on opportunities available

PRODUCT AND SERVICES.

Our Products.

Our Focus products include all variety of minerals that Tanzania is endowed with like:

1. Metallic minerals such as gold, iron ore, silver, copper, platinum, bauxite, nickel and tin
2. Gemstones such as diamond, tanzanite, ruby, garnet, emerald, alexandrite and sapphire.
3. The industrial minerals include kaolin, phosphate, lime, gypsum, diatomite, bentonite, vermiculite, Gypsum, Limestone, salt and beach sand;
4. Building materials such as stone aggregates and sand
5. Energy minerals such as coal and uranium

The minerals occur in the following areas as our focus areas with network of Small-Scale Miners:

1. Gold in the greenstone belt south, east and west of Lake Victoria;
2. Diamonds in kimberlite pipes in central and south Tanzania and the southern part of Lake Victoria Goldfield;





3. Nickel, cobalt, copper, tin and tungsten minerals in north-western Tanzania;
4. Titanium, vanadium and iron in south-western Tanzania;
5. Coal in south-western Tanzania;
6. Uranium in central and southern Tanzania;
7. Soda ash, salt, gypsum, travertine and torn (evaporites) in the rift valley and along the coast;
8. Kaolin, mica, phosphate, magnesite, beach sand, diatomite, stone aggregates, dimension stone and sand in different parts of Tanzania.



OUR SERVICES

1. We are trusted partner and mentor. We incubate small scale miners into fully fledged sustainable mining enterprises. We help artisans and small scale miners to register formal groups and associations, and we incubate their groups into fully- fledged, future-fit, sustainable mining enterprises attaining higher improved quality yields, participating in commercial mineral supply chains and enabling multinationals in the mining sector to source reliable supply of high-quality minerals from our network of small scale miners. We provide value through integrated support services which includes trainings, consultation and mentorship.



2. We partner with financial Institutions to provide access to credit facilities to Small Scale Miners.
3. We partner with mining equipment suppliers and supply to our network of Small Scale Miners with affordable equipments for mining.
4. We provide technical advice to our Small Scale Miners on mining and Value addition
5. We provide Market access to our network of Small Scale Miners.
6. Women empowerment programs, whereby we provide capacity building and training for women miners to increase technical and legal mining knowledge as well as to identify entrepreneurial opportunities. Additionally, establish child care centers and other services to address challenges women face at mine sites.





We are situated at Regent Street No. 15, P.O Box 7221 Dar Es Salaam Tanzania
Tel: +255 767 636 678, +255 627 323 629, Email: imoplctz@gmail.com